

Since 1955 Korea



P-PRIX[®]

Quality Abrasive Products



 **제일연마공업주식회사**



Certified Company No. 15 100 0000 **ISO 9001 : 2015**

MADE BY SUPERIOR TECHNOLOGY OF CHEIL KOREA
www.grinding.co.kr

General Selection

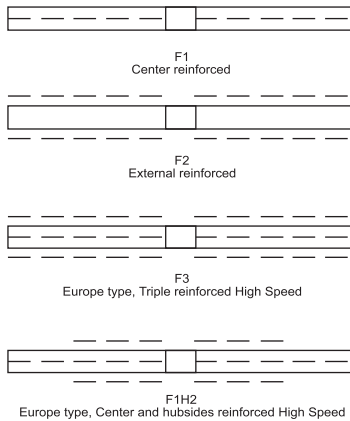
A24R	General purpose wheels for the broad range of steel and ferrous metals.	ST24	Exceptional fast and cool cutting on stainless steel and hard materials. (IRON-FREE)
A30P	Fast cut wheels give a soft, free cutting action, and are especially good for efficient cutting of hard metals.	C24R	General purpose application in concrete, stone, masonry products.
AL36	For first choice of many aluminum applications and non-ferrous metals with load-resistance.		



TYPE 41

	SIZE	G/F	MAX.RPM	PKG (IN/OUT)	APL.
	FA46S PRIME 108 X 1.2 X 15.88	F2	15,000	50/400	
	FA46S 105 X 1.2 X 15.88	F2	15,000	20/600	
	SA46T 105 X 1.2 X 15.88	F2	15,000	20/600	
4"	105 X (1)(1.2)(1.6) X 15.88	F2	15,000	10/200	
	105 X 2 X 15.88	F2	15,000	70/700	
	105 X 2.5(3) X 15.88	F2	15,000	50/500	
4.5"	115 X 1.6 X 22.23	F2	13,000	100/800	
	115 X 2 X 22.23	F2	13,000	70/560	
	115 X 2.5(3) X 22.23	F2	13,000	50/400	
5"	125 X 1.6 X 22.23	F2	12,000	100/800	
	125 X 2 X 22.23	F2	12,000	70/560	
	125 X 2.5(3) X 22.23	F2	12,000	50/400	
6"	150 X 2 X 22.23	F2	10,200	70/280	
	150 X 2.5(3) X 22.23	F2	10,200	50/200	
	180 X 1(1.2) X 22.23	F0/F1	6,820	10/100	
7"	180 X 2 X 22.23	F2	8,500	140	
	180 X 2.5(3) X 22.23	F2	8,500	100	
8"	205 X 2 X 22.23	F1	7,640	50/100	
9"	230 X 2.5(3) X 22.23	F2	6,500	50/100	
10"	255 X 2 X 25.4	F1	4,774	25	
12"	305 X 3 X 25.4	F1/F2/F1H2	4,010/5,090	25	
14"	355 X 3 X 25.4	F1/F2/F1H2	3,900	25	
16"	405 X 3 X 25.4	F1/F2/F1H2	3,400	25	
20"	510 X 4 X 25.4	F2	2,710	10	

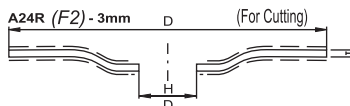
Reinforced method



TYPE 42

	SIZE	G/F	MAX.RPM	PKG (IN/OUT)	APL.
4"	100 X 3.0 X 15.88	F2	15,000	50/500	
5"	125 X 3.0 X 22.23	F2	12,000	50/400	
6"	150 X 3.0 X 22.23	F2	10,200	50/200	
7"	180 X 3.0 X 22.23	F2	8,500	100	
9"	230 X 3.0 X 22.23	F2	6,500	50/100	

Reinforced method



- * Hole in 1/2" (12.7), 5/8" (15.88), 20, 7/8" (22.23), 1" (25.4), 1.1/8" (28.58), 30mm 1.3/8" (34.92) available upon request
- * Please specify (H) hole size when order.
- * Special order for thickness available (2.5),(3.5).→14",16"

DEPRESSED CENTER WHEELS

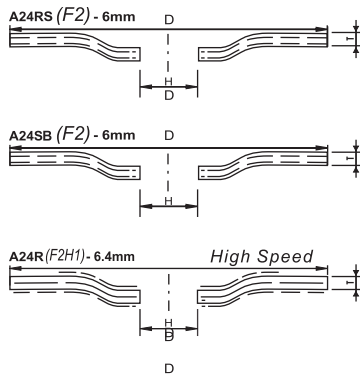
General Selection

A24R	General purpose wheels for the broad range of steel and ferrous metals.	ST24	Exceptional fast and cool cutting and grinding on stainless steel and hard materials. (IRON-FREE)
A24S	Depressed Center Wheels give a soft, free cutting and grinding action, and are especially good for efficient cutting and grinding of hard metals.	C24R	General purpose application in concrete, stone, masonry products.
AL36*	Specially designed to resist loading when grinding aluminium and other non-ferrous metals.		

*(Special order available A24RS, A36P, WA36P)

TYPE 27

■ Reinforced method



	SIZE	G/F	MAX.RPM	PKG(IN/OUT)	APL.
4"	100 x 4 x 15.88	F2	15.000	40/400	
	100 x 6 x 15.88	F2	15.000	25/250	
	100 x 6.4 x 15.88	F2H1	15.000	25/250	
4.5"	115 x 6 x 22.23	F2	12.000	25/200	
	115 x 6.4 x 22.23	F2H1	13.000	25/200	
5"	125 x 6 x 22.23	F2	12.500	25/200	
	125 x 6.4 x 22.23	F2H1	12.500	25/200	
6"	150 x 6 x 22.23	F2	10.200	25/100	
	150 x 6.4 x 22.23	F2H1	10.200	25/100	
7"	180 x 6 x 22.23	F2	8.600	50	
	180 x 6.4 x 22.23	F2H1	8.600	50	
9"	230 x 6.4 x 22.23	F2H1	6.500	25/50	

Available : Hole with Aluminum hub 4.5", 5", 6", 7"

FLEXIBLE DISC, TYPE 27



SPEC & SIZE	G/F	MAX.RPM	PKG(IN/OUT)	APL.
AC60 100 X 2.5 X 15.88	F1	13.500	25/300	
WA60 100 X 2.5 X 15.88	F1	13.500	25/300	
GC80 100 X 2.5 X 15.88	F1	13.500	25/300	

* AC for Metal, WA for St. Steel, GC for Glass and Stone

PS. GOLD FLEXIBLE DISC, TYPE 27



SPEC & SIZE	G/F	MAX.RPM	PKG(IN/OUT)	APL.
PS36PB 102 X 3.0 X 15.88	F1	15.300	20/200	
PS60PB 102 X 2.0 X 15.88	F1	15.300	20/200	
PS80PB 102 X 2.0 X 15.88	F1	15.300	20/200	

Make Your Business Better and Safer

CHEIL GRINDING WHEEL IND.CO.,LTD



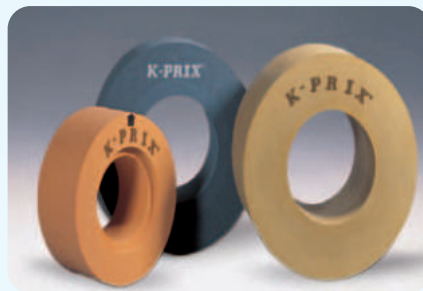
Surface Grinding Wheels



Tool Room Wheels



Mounted Point Wheels



Centerless Grinding Wheels



Crankshaft Grinding Wheels



MgO Wheels / Discs, Epoxy Discs



Roll Grinding Wheels



Heavy Duty Snagging Wheels



Head Office & Factory in
Pohang - City, Korea.
1955



Anseong Factory in
Anseong - City, Korea.
1980



PT. Cheil Abrasive Indonesia. 2002
PT. Sinar Indah Jaya Abadi. 2012



PT. Cheil Abrasive Indonesia 2. 2015

Make Your Business Better and Safer

(by Risma)